

Henderson County Ag News

With Jessica James

March 2025/April 2025



**For more local ag news, "LIKE" Henderson County Agriculture on
Facebook at:
www.facebook.com/hendersonagriculture**

Jessica James
Jessica James
Henderson Co. Extension
ANR Agent
270-826-8387

Cooperative Extension Service

Agriculture and Natural Resources
Family and Consumer Sciences
4-H Youth Development
Community and Economic Development

MARTIN-GATTON COLLEGE OF AGRICULTURE, FOOD AND ENVIRONMENT

Educational programs of Kentucky Cooperative Extension serve all people regardless of economic or social status and will not discriminate on the basis of race, color, ethnic origin, national origin, creed, religion, political belief, sex, sexual orientation, gender identity, gender expression, pregnancy, marital status, genetic information, age, veteran status, physical or mental disability or reprisal or retaliation for prior civil rights activity. Reasonable accommodation of disability may be available with prior notice. Program information may be made available in languages other than English. University of Kentucky, Kentucky State University, U.S. Department of Agriculture, and Kentucky Counties, Cooperating.

Lexington, KY 40506



Disabilities
accommodated
with prior notification.

Scan the QR code to access the February 2025 Kentucky Field Crop News!



Kentucky Field Crops News

Spanning 5 departments and 120 counties

February 2025, Volume 01, Issue 02

Martin-Gatton
College of Agriculture,
Food and Environment

Grain and Forage
Center of Excellence

UK Wheat Science Group

UK Corn & Soybean Science Group

Inside this issue:

Too Wet to Soil Sample but Ideal to Check for Soil Compaction	1
Winter Wheat in February	6
Corn Yield Recovery with At-Tasseling/Early Silking N Application	8
What Limits Yield – The Source or the Sink? Does it Matter?	11
Follow the Basics to Maintain Yields and Manage Costs	14
Nitrogen Management Strategies in Winter Canola	17
2025 Integrated Pest Management Training School Meeting	20
Upcoming Events	22

Too Wet to Soil Sample but Ideal to Check for Soil Compaction

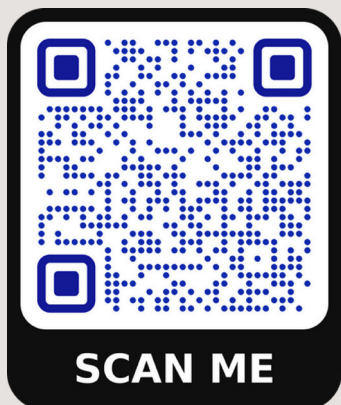
Dr. Edwin Ritchey, University of Kentucky

Dr. John Grove, University of Kentucky

We know producers are ready for the soil to dry out so they can start topdressing wheat with their first shot of nitrogen. This also makes us think about soil compaction, which is simply compressing a given volume of soil into a smaller volume. Compaction can occur in different places in the field and can be due to different reasons. The main reason for soil compaction in row crop production comes down to doing some operation when the soil is too wet. Soil compaction reduces the soil pore space, the amount of air and water a soil can hold, and the pore space continuity that supports air and water exchange/movement in the soil. Compacted soil also has higher densities that restrict root proliferation and water infiltration - and these can reduce crop yield. Further, if compacted are-

1

Scan the QR code to access the 2025 Corn Foliar Fungicide Efficacy report!



CPN-2011-W

Management of Corn
Diseases

Fungicide Efficacy for Control of Corn Foliar Diseases

The Corn Disease Working Group (CDWG) developed ratings for how well fungicides control major corn diseases in the United States. The CDWG determined efficacy ratings for each fungicide listed in the table by field testing the materials over multiple years and locations. Ratings are based on the product's level of disease control and does not necessarily reflect yield increases obtained from product application. A product's efficacy depends upon proper application timing, rate, and application method as determined by the product label and overall disease level in the field at the time of application. Differences in efficacy among each fungicide product were determined by directly comparing products in field tests using a single application of the labeled rate. For application timing and use considerations, please contact your local cooperative extension service. The table is not intended to be a list of all labeled products. Additional fungicides are labeled for disease on corn. Other fungicides may be available for diseases not listed in the table, including Diplodia, Gibberella, and Fusarium ear rots. Many products have specific use restrictions about the amount of active ingredient that can be applied within a period of time or the amount of sequential applications that can occur. Read and follow all use restrictions prior to applying any fungicide.



Tar spot

Find Out More

The Crop Protection Network (CPN) is a multi-state and international collaboration of university and provincial extension specialists, and public and private professionals who provide unbiased, research-based information to farmers and agricultural personnel. Our goal is to communicate relevant information that will help professionals identify and manage field crop diseases.

Find more crop disease resources at
CropProtectionNetwork.org



We Are Extension



Southern rust

This article is partially funded by U.S. corn farmers through the National Corn Growers Association. This publication was developed by members of the Corn Disease Working Group. It was compiled and published by Kentucky State University. The information in this publication is only as good as the authors assume no liability for practices implemented based on the information. Reference to products in this publication is not intended to be an endorsement to the exclusion of others that may be similar. Individuals using such products assume responsibility for their use in accordance with current directions of the manufacturer. In accordance with Federal copyright law and U.S. Department of Agriculture (USDA) and rights regulations and policies, the USDA, its Agencies, offices, and employees, and institutions participating in or administering USDA programs are prohibited from discriminating based on race, color, national origin, religion, sex, gender identity (including gender expression), sexual orientation, disability, age, marital status, family/parental status, income derived from a public assistance program, political beliefs, or reprisal or retaliation for prior civil rights activity, in any program or activity conducted by USDA (not all laws apply to all programs). Remedies and complaint filing deadlines vary by program or incident. Persons with disabilities who require alternative means of communication for program information (e.g., Braille, large print, audiotape, American Sign Language, etc.) should contact the responsible Agency or USDA's Disability Center at (202) 720-2600 (voice and TDD) or contact USDA through the Federal Relay Service at (800) 877-8339. Additionally, program information may be made available in languages other than English. To file a program discrimination complaint, complete the USDA Program Discrimination Complaint Form, AD-3027, available at www.usda.gov or in any USDA office or write a letter addressed to USDA and provide in the letter all of the information requested in the form. Send your copy of the complaint form, call (800) 845-6042, or email your complaint form to USDA-2025-0415. U.S. Department of Agriculture, Office of the Assistant Secretary for Civil Rights, 1400 Independence Avenue, SW, Washington, D.C. 20250-9415. (2) has (202) 690-7442 or (2) email program.discrimination@usda.gov. USDA is an equal opportunity provider, employer, and lender. ©2025 by the Crop Protection Network. All rights reserved.

SALE TECHNIQUE

Cattle will be co-mingled into the following contemporary groups:

Breed Type:

Black (Angus based)
Black Cross
Cross-bred
Earred

Frame and Muscle:

Medium to Large Frame #1
Medium to Large Frame #2
Small Frame #1

Weight:

Minimum weight will be 500 pounds with groups broken at 75-pound intervals.

All others will be classified as outs, including stags, and CPH tags will be removed from the outs.

For more information or to register, contact your County Extension Agent...

In Kentucky

Daviess County - (270) 685-8480
Hancock County - (270) 927-6618
Henderson County - (270) 826-8387
Hopkins County - (270) 821-3650
McLean County - (270) 273-3690
Muhlenberg County - (270) 338-3124
Ohio County - (270) 298-7441
Union County - (270) 389-1400
Webster County - (270) 639-9011

In Indiana

Spencer County - (812) 649-6022
Perry County - (812) 547-7084

KBN Facilitator

Ben Lloyd - (270) 993-1074

Green River Area CPH60 Pre-Conditioned Cattle Sale April 24, 2025



Kentuckiana Livestock Market

Sponsored by:

Green River Area
Beef Improvement Group
Green River Area Cooperative Extension
Daviess County Cattlemen's Association
Kentucky Beef Network

With support of the
Kentucky Department of Agriculture



Trade names were decided by the Green River Area CPH Sale Committee. No endorsement by the Cooperative Extension Service is intended, nor criticism implied of similar products that are not named.

COOPERATIVE EXTENSION



GREEN RIVER PRE-CONDITIONED CATTLE SALE UPCOMING DATES

April 24, 2025—Heifers & Steers

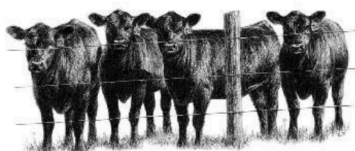
August 14, 2025—Heifers & Steers

December 4, 2025—Heifers & Steers

February 19, 2026—Heifers & Steers

TERMS

- Kentuckiana Livestock marketing fee will be 3.00% commission of your total sale value.
- CPH60 ear tags are required and available at Green River Area County Extension Offices.
- \$2.00/head ear tag fee will be withheld by sale barn.



GREEN RIVER CPH60 SALE

- All calves must be weaned a minimum of 60 days prior to sale.
- It is mandatory that all cattle have free choice of required analysis mineral.
- All calves must be able to eat from a feed trough or bunk and drink water from a tank or automatic waterer.
- All surgery (castration and dehorning) should have been done and completely healed prior to sale.
- All calves must be completely dehorned and healed.
- Dewormed with **Dectomax—Zoetis** or **Long Range—Merial** endectocide. Must be applied no more than 60 days prior to sale.
- Vaccinated and boosted for Four-Way Respiratory (IBR, PI3, BRSV, BFD): **1st Vaccine—Cattle Master—Zoetis** or **Bovishield Gold 5—Zoetis**; **Booster—Bovishield Gold 5—Zoetis**. The booster vaccine must be given a minimum of 14 days prior to sale and be a modified live vaccine (BRSV may be killed or MLV). The earliest any vaccine should be given is not more than 90 days prior to sale.
- Vaccinated for Pasturella and Clostridial 7-Way using **One Shot Ultra 7—Zoetis**.
- Each consigner will certify that health and management practices were implemented and provide receipts of medication purchases.
- Cattle that are yearlings and that have been weaned 90 days by the time of the sale will not be required to re-vaccinate if all health standards were completed previously, only dewormed.
- Heifers are guaranteed open at time of sale and steers are guaranteed not to be bulls!! Seller agrees to reimburse buyer \$200.00 for pregnant heifers or intact bulls. All claims will be properly verified by a veterinarian within four (4) months of sale.
- Calves must have access to a free choice mineral supplement which contains a minimum of 1400 ppm copper (no copper oxide), 26 ppm selenium, 3000 ppm zinc, 3000 ppm manganese, and a salt content of 18-25%.



OBJECTIVE

To provide an opportunity for producers to group cattle into marketable lot sizes, to maintain identification of health and management practices, and to provide a positive reputation toward calves marketed from the Green River Area of Kentucky.



Broccoli Brunch Casserole

Nonstick cooking spray	1 1/2 cups shredded, part skim mozzarella cheese, divided	1 teaspoon ground black pepper
8 ounces ground turkey sausage	8 eggs	1/2 teaspoon salt
3 1/2 cups broccoli florets, chopped	1 cup part skim ricotta cheese	1 Roma (Plum) tomato, thinly sliced
	1/4 cup skim milk	

Preheat oven to 350 degrees F. **Spray** a 9-by-13-inch baking dish with nonstick cooking spray. **Place** a medium-sized skillet over medium heat. **Sauté** sausage until evenly brown, **drain** well, **crumble**, and **cool slightly**. In a medium bowl, **mix** cooked sausage, broccoli, and a 1/2-cup of mozzarella. In a separate bowl, **whisk** eggs until frothy and then **combine** with a 1/2-cup of mozzarella, ricotta cheese, milk, pepper, and salt. **Spoon** the sausage mixture into the prepared baking dish. **Spread** the egg mixture over the sausage mixture. **Sprinkle** with the remaining mozzarella,

and **arrange** the tomato slices on top. **Cover** with foil, and **bake** 30 minutes. **Uncover**, and **bake** for an additional 15 minutes. Let **stand** for 10 minutes before serving.

Yield: 8 slices

Nutritional Analysis:

260 calories, 16g total fat, 7g saturated fat, 0mg cholesterol, 550mg sodium, 7g total carbohydrate, 1g fiber, 1g total sugars, 0g added sugars, 20g protein, 6% DV vitamin D, 25% DV calcium, 10% DV iron, 6% DV potassium.

